

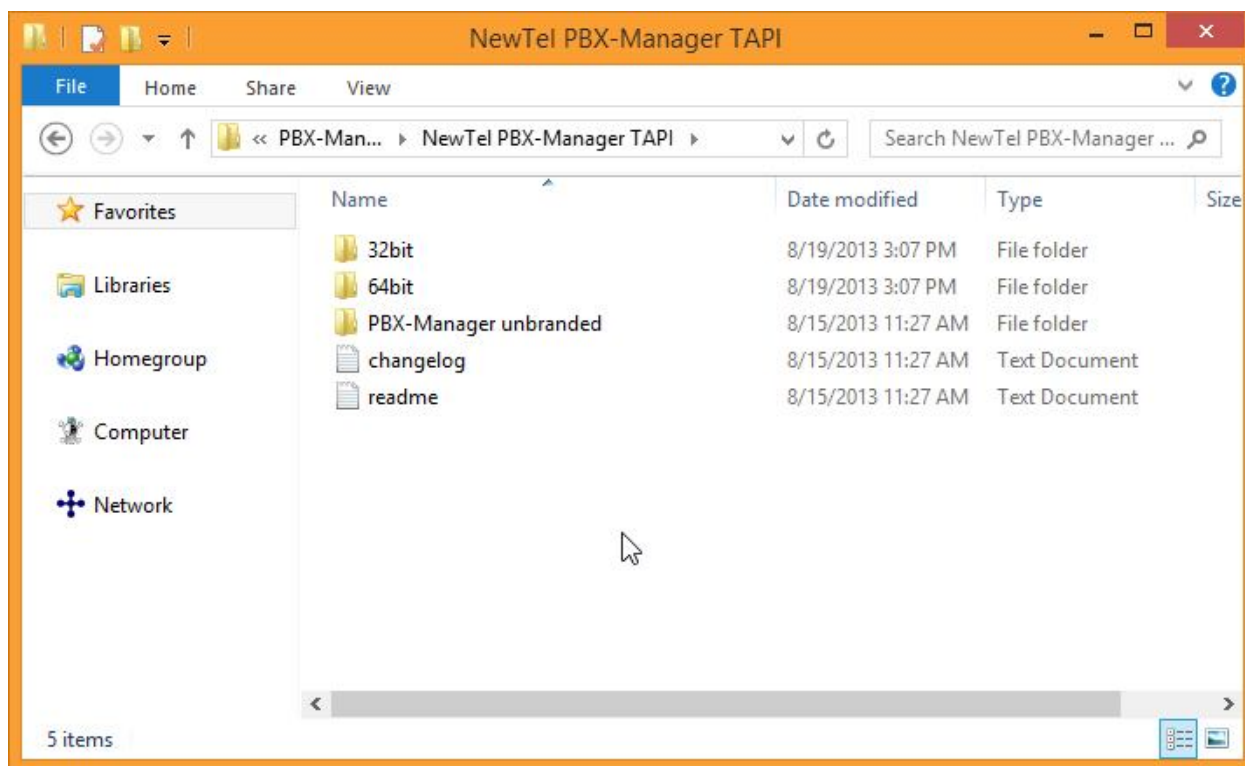
How to install the NewTel Outlook TAPI.

Step 1: Select the appropriate file, if your system is:

A 32bit System select: PBX-Integration-32bit.msi

A 64bit System select: PBX-Integration-64bit.msi

Please note for more information on how to find out what your system type is see page6.

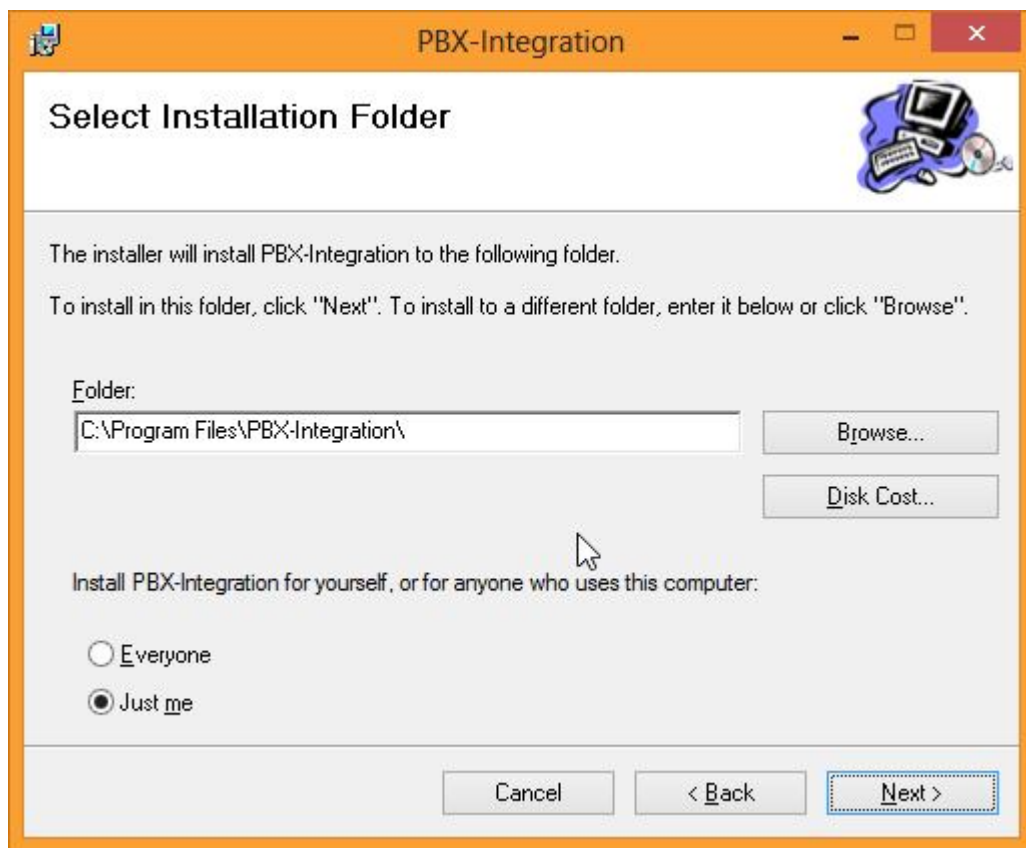


Double click the appropriate file. Step 2: Select Next.



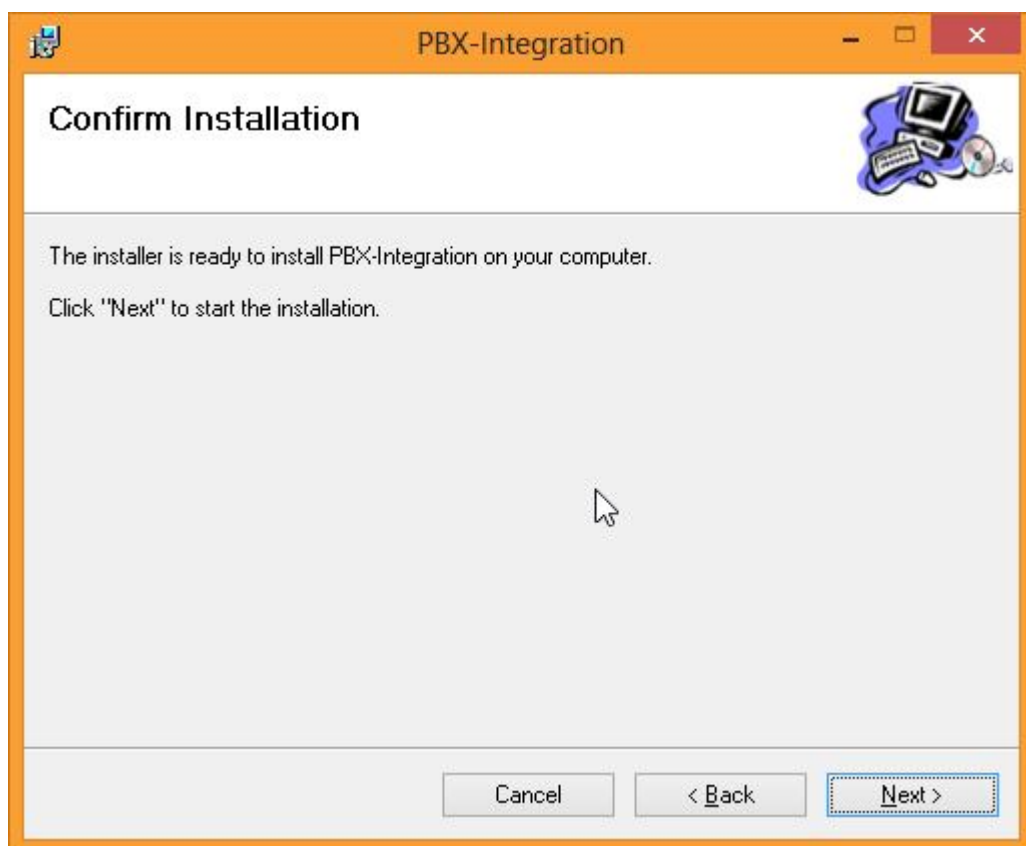
Step 3:

Select Next.



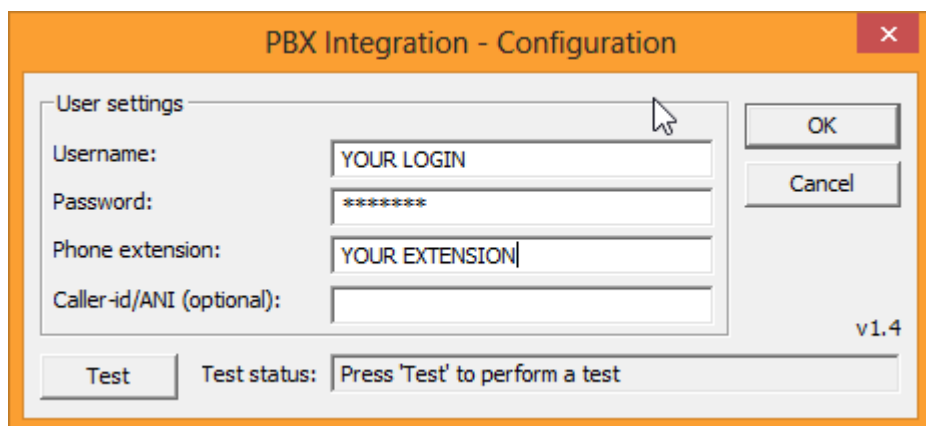
Step 4:

The installation will start, Pick a location (or leave on the default) and click Next.



Step 5:

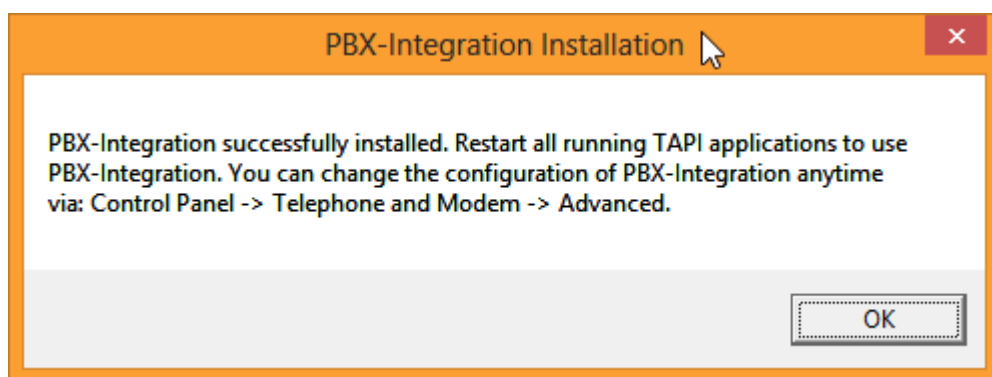
Fill out your credentials and press OK.



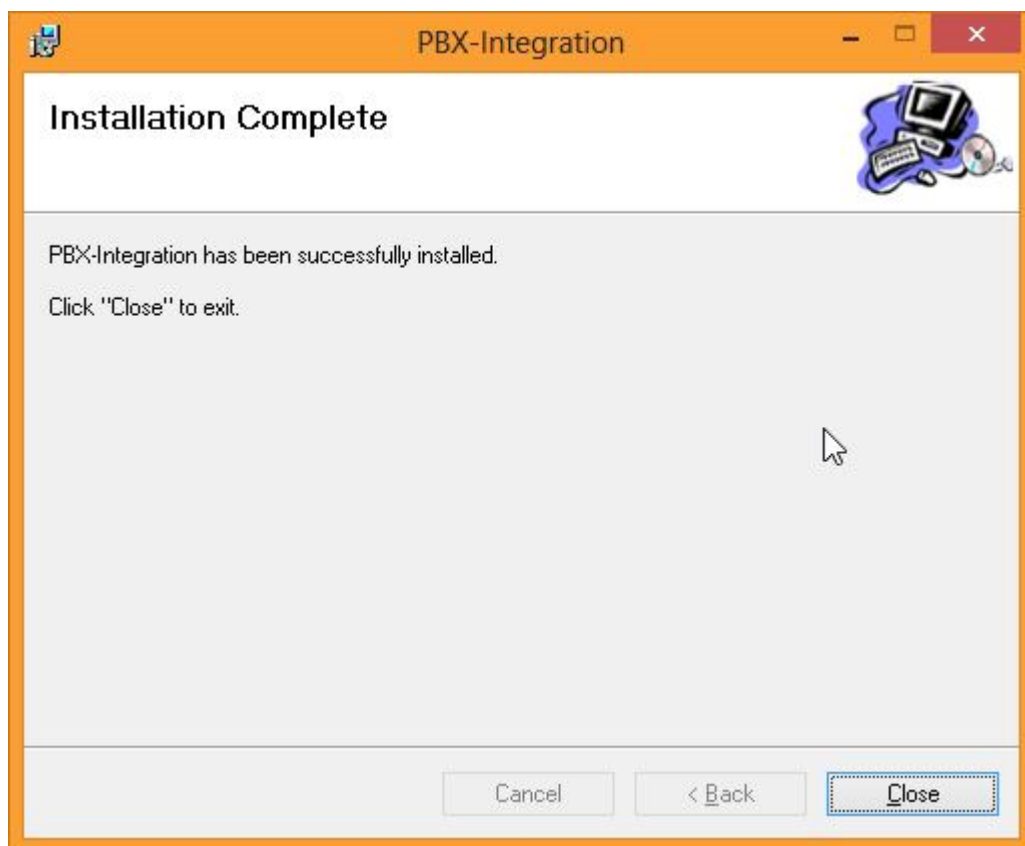
The image shows a dialog box titled "PBX Integration - Configuration" with a close button (X) in the top right corner. The dialog is divided into two main sections. The top section, labeled "User settings", contains four input fields: "Username:" with the text "YOUR LOGIN", "Password:" with "*****", "Phone extension:" with "YOUR EXTENSION", and "Caller-id/ANI (optional):" which is empty. To the right of these fields are "OK" and "Cancel" buttons. The bottom section contains a "Test" button and a "Test status:" label followed by the text "Press 'Test' to perform a test". The version number "v1.4" is displayed in the bottom right corner of the dialog.

Step 6: The instillation will continue.

Step 7: Select OK.

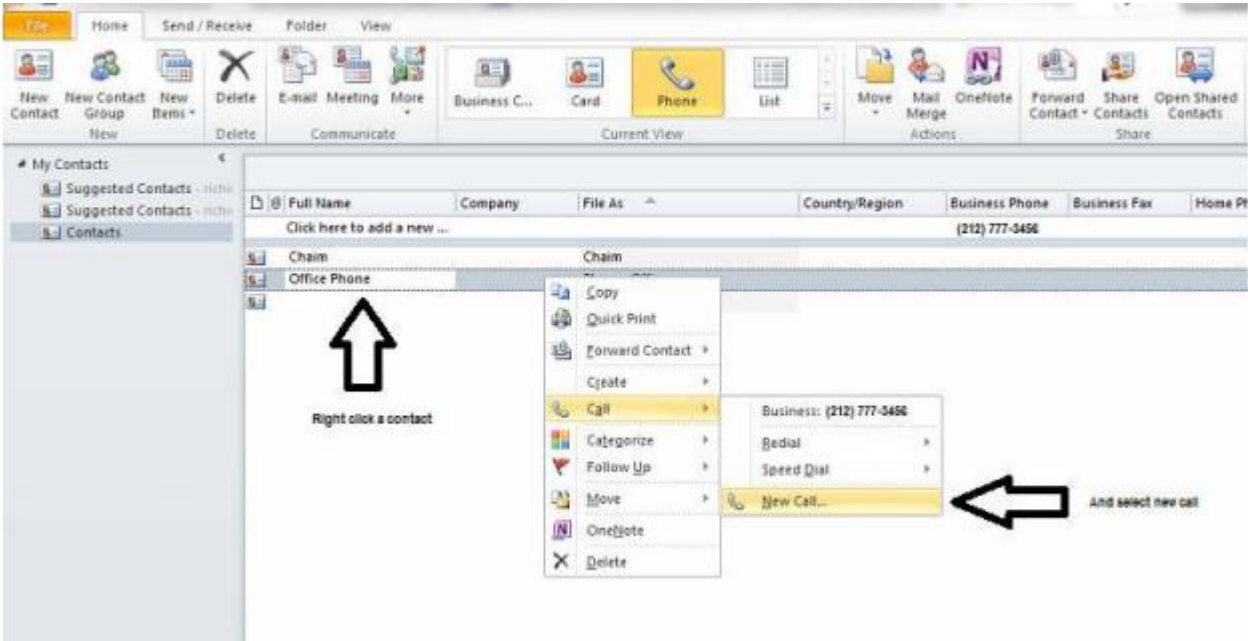


Step 8: Select Finish.

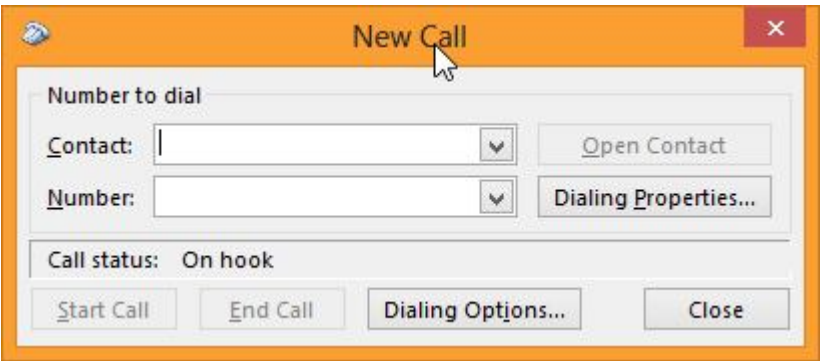


Step 9: Make sure you configure Outlook to use this program.

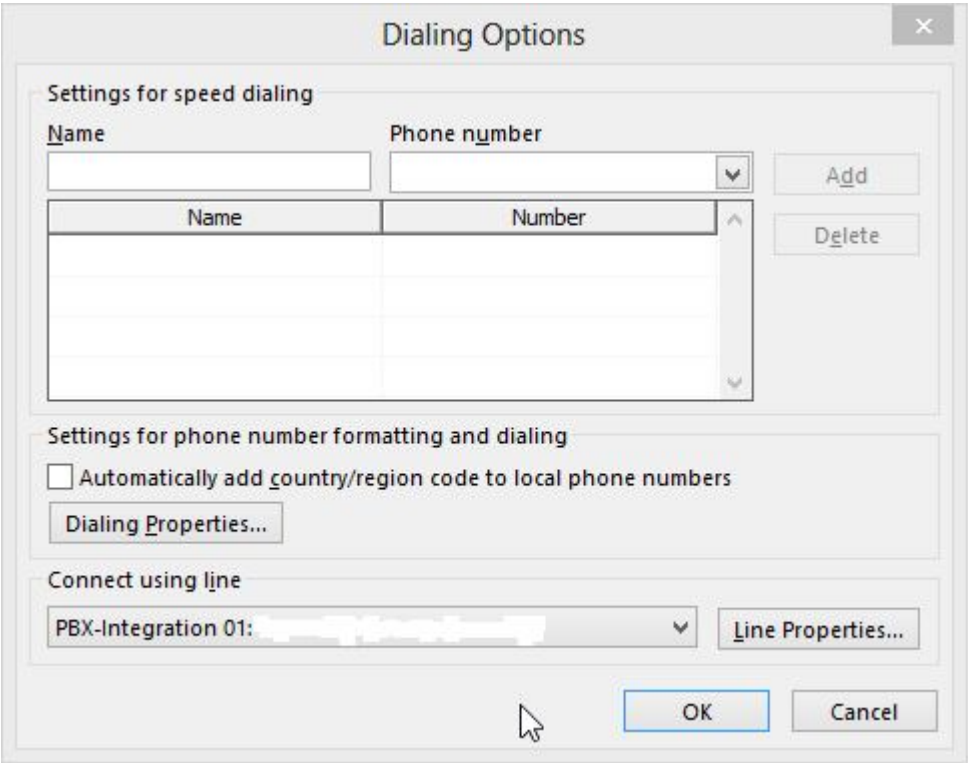
In Outlook right click on a contact and select "New Call"



Step 10: Select Dialing Options



Step 11: Select the PBX-Integration from the drop down and press OK



4 Ways to Check if your Windows Is 32 Bits or 64 Bits

—

wikiHow

<http://www.wikihow.com/Check-if-Windows-Is-32-Bits-or-64-Bits>

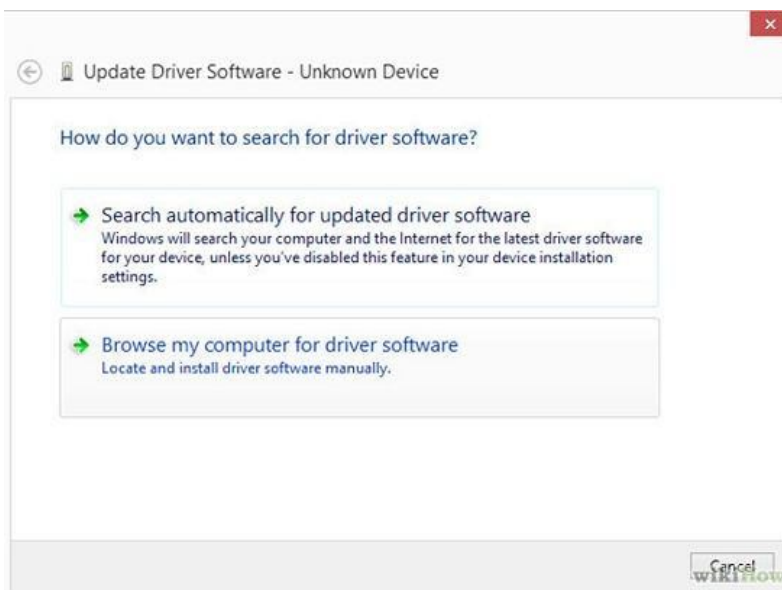
How to Check if Windows Is 32 Bits or 64 Bits

Knowing what system architecture you are running on your computer sounds daunting, but it's essential when you're upgrading or building a computer. Follow this guide to find out if you're using 32-bit or 64-bit Windows, for any version.

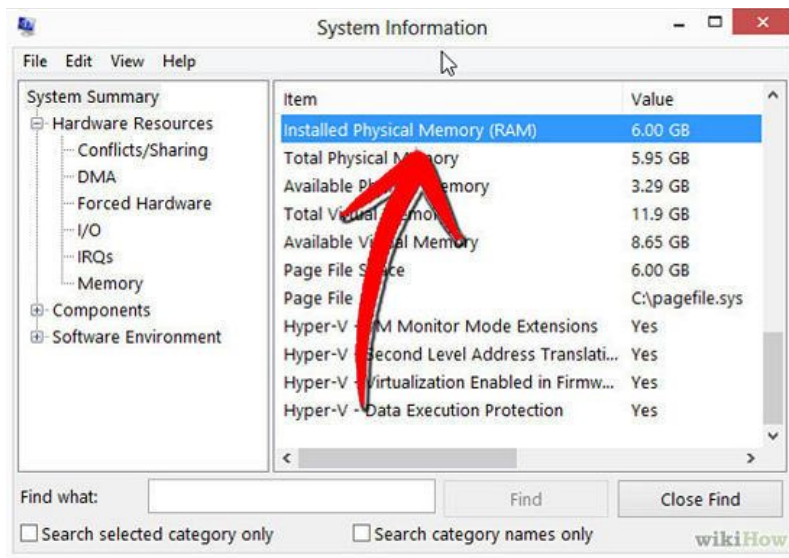
Steps

32-bit vs. 64-bit

- 1 **Know why it's important.** You need to know your operating system type when **downloading drivers** for your hardware. 64-bit drivers **will** not work on a 32-bit operating system, and vice versa.

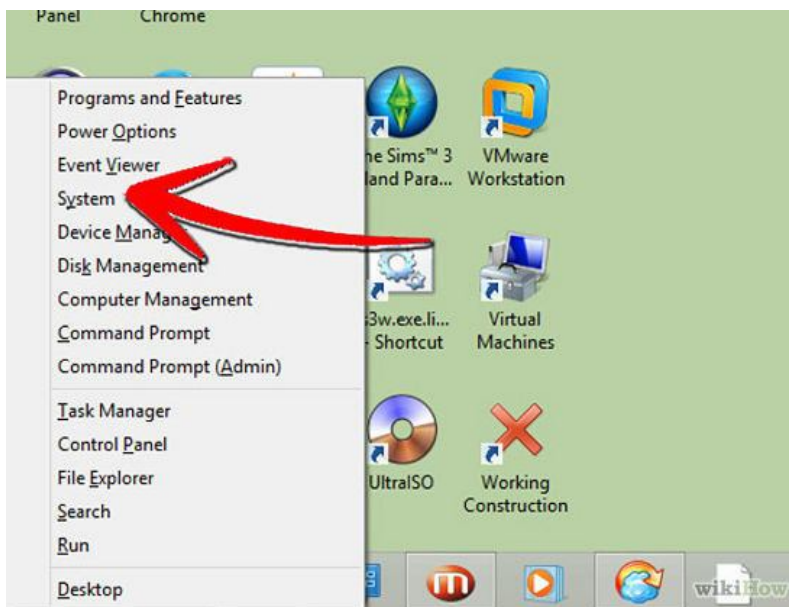


- 2 **Know how it affects your system.** There is slightly less support in general for 64-bit operating systems, but their advantage is that they can handle more RAM than a 32-bit one. A 32-bit Windows will only recognize 4GB of RAM, even if more than that is installed. A 64-bit operating system can go up to 128Gb or more.

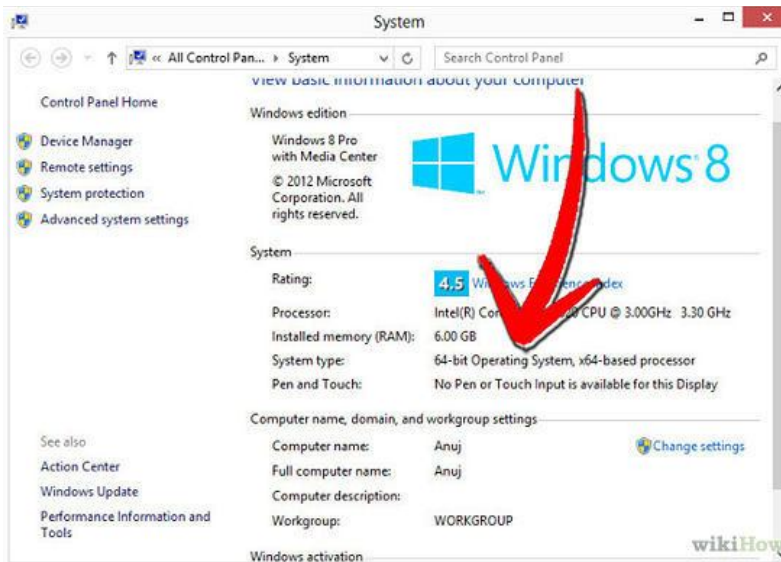


Windows 8

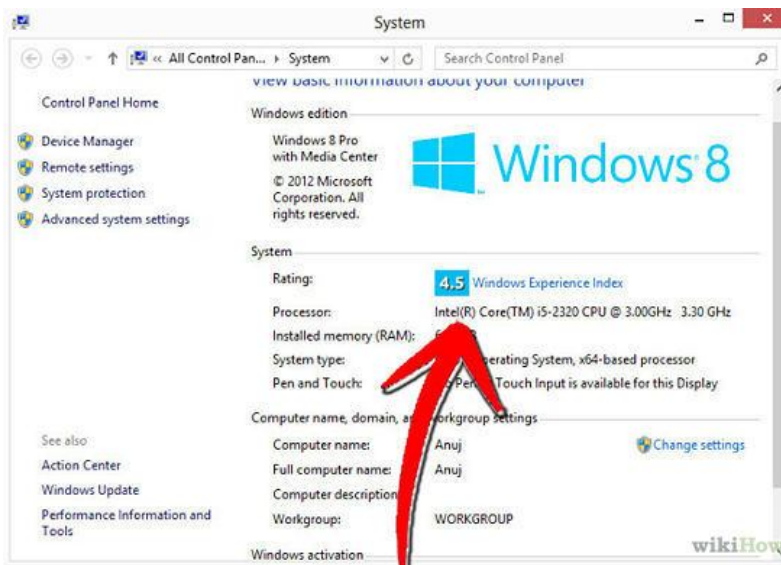
- 1 **Open the Power User menu.** Press the Windows key and the X key top open this menu. Click on System.



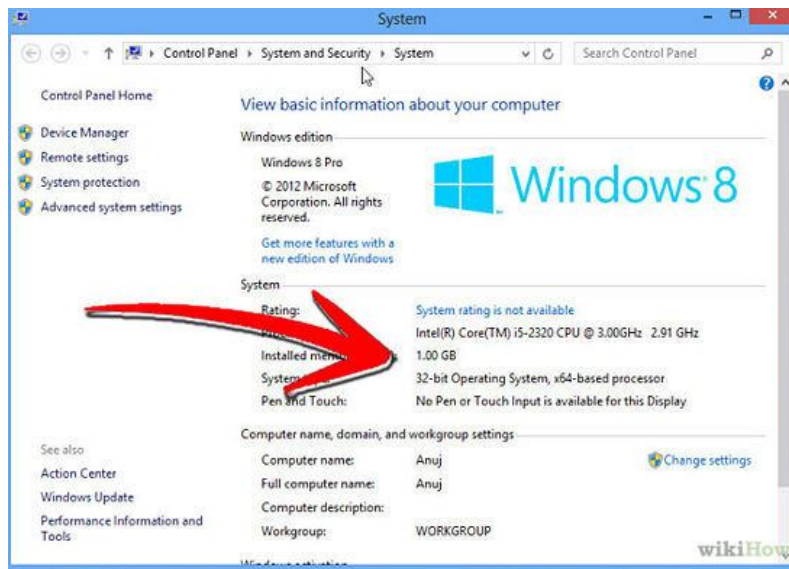
- 2 **Look for System Type.** This is located under the System heading. It will say either 32-bit Operating System or 64-bit Operating System.



- 3 **Look at the processor type.** You can install a 32-bit Windows 8 on either a 32- or 64-bit processor. To see what your processor is capable of running, look for the processor type underneath the System heading.

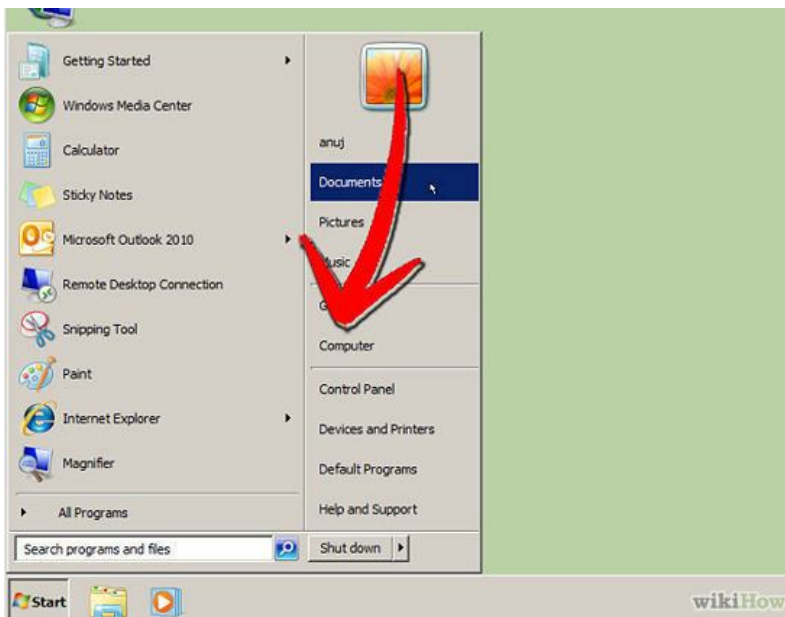


- x86 is 32-bit, and x64 is 64-bit

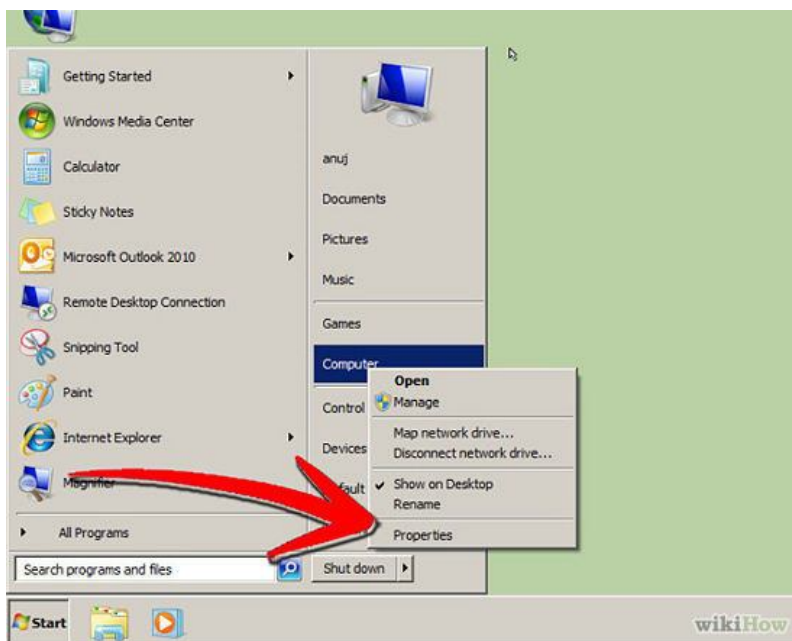


Windows Vista & 7

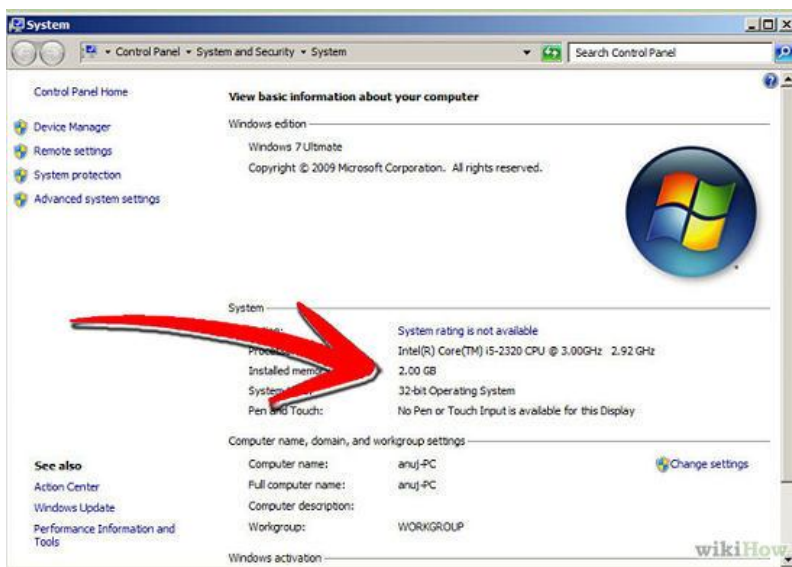
- 1 **Open the Start menu.** Right-click on Computer.



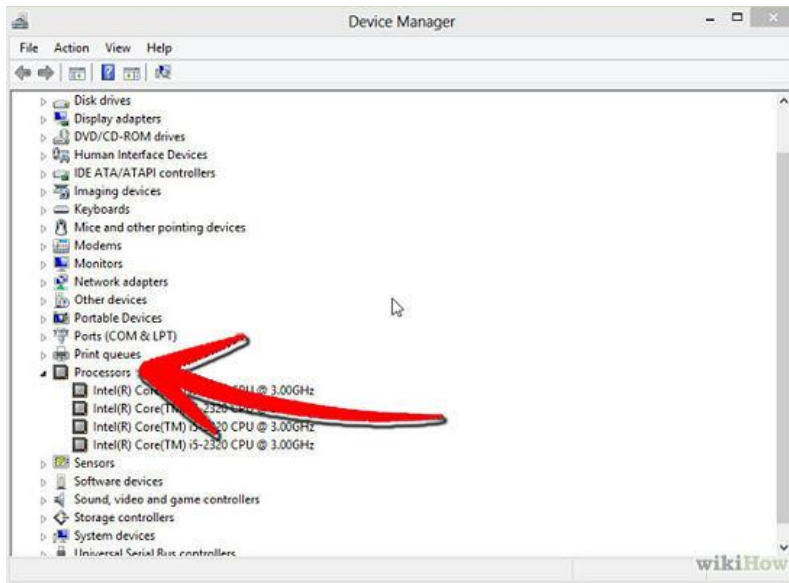
- 2 **Select Properties.** This will open your system information. Underneath the System header, you will see either 32-bit or 64-bit listed next to System type.



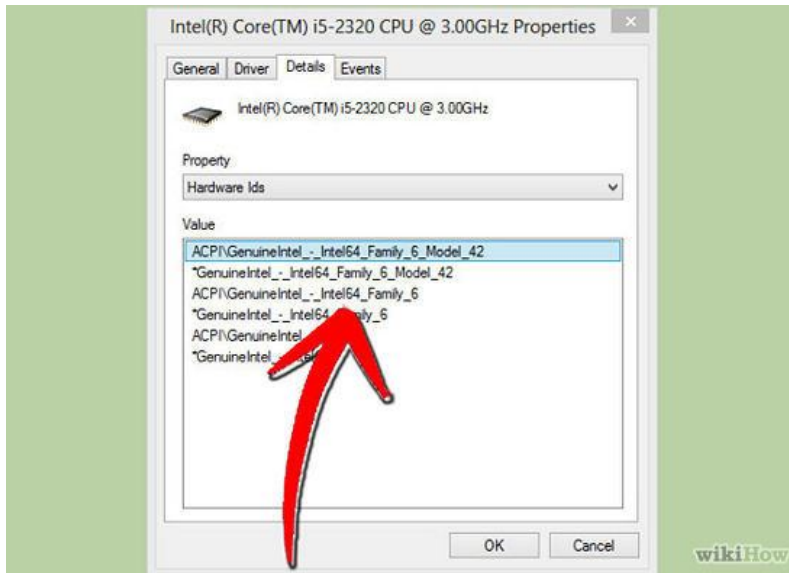
- 3 **Find your processor type.** Since you can have a 32-bit operating system installed on a 64-bit processor, it may be helpful to know if you're actually running a 64-bit processor. With the System Information open from the previous step, click Device Manger in the left frame.



- Select Processors from the list on the left. Click the “+” sign to expand the categories. Double-click on your processor. If you have multiple of the same processors listed, that means you are running a multi-core processor. Double-click on any of the listed options.

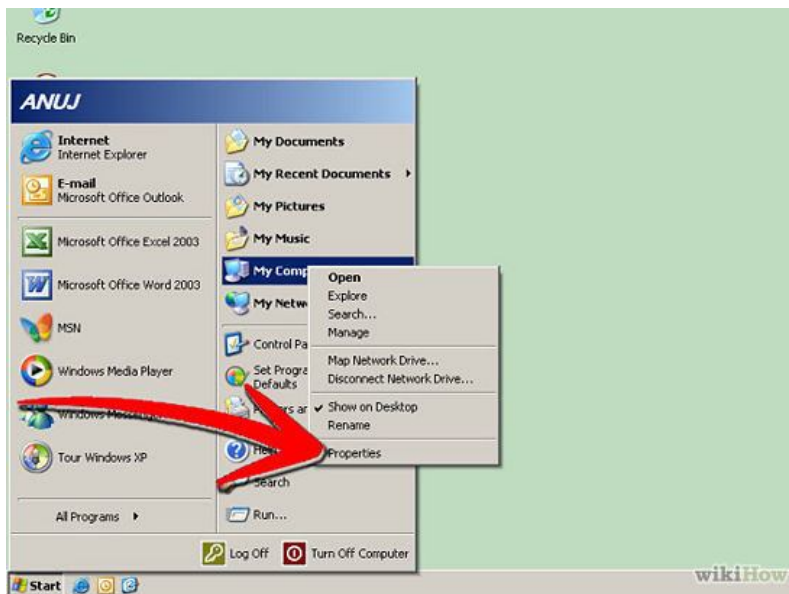


- Open the Details tab. Select “Hardware Ids” from the drop down menu. If you see x86, then you’re running a 32-bit processor. If you see x64, then it’s a 64-bit.

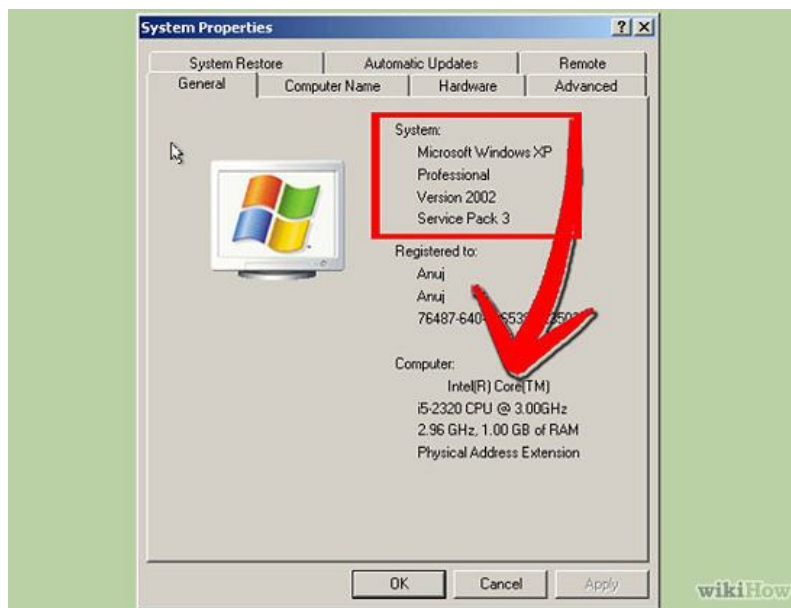


Windows XP

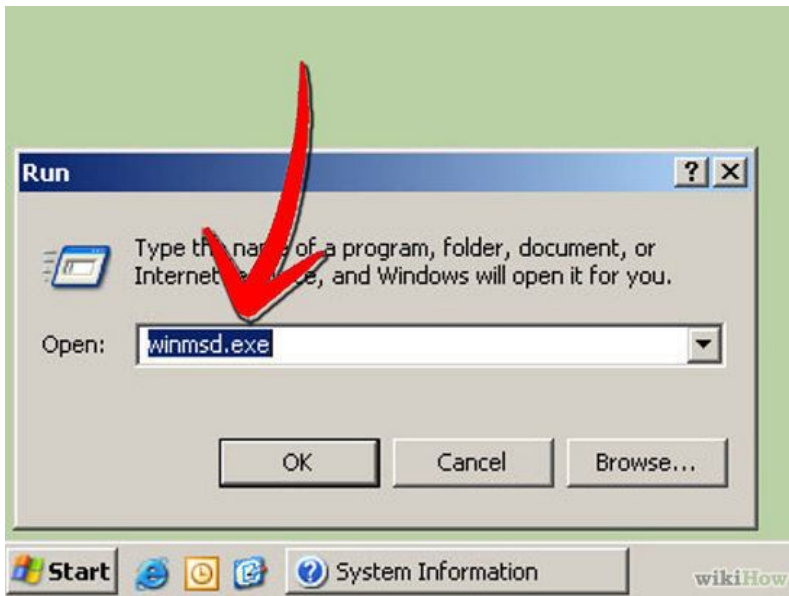
- 1 **Open the Start menu.** Right-click My Computer and click on properties. Open the General tab.



- Check the listing under System. 64-bit Windows will say “Windows XP Professional/Home x64 Edition”. If it just says Windows XP Professional/Home, then you are running 32-bit Windows.



- 2 **Click Start, then Run.** You can also check by opening the Help and Support Services window. Enter “winmsd.exe” into the Run line and press Enter.



- Select System Summary in the left frame. In the right frame, locate Processor. If it is an x86 processor, then it is 32-bit. If it says IA-64 or AMD64, then it is 64-bit.

